

# Welcome to the Red Team

Emily Sawyer

Jessica Aysseh

Connie Jones

Jen Murzin

Caitlin Kneisel

Language Arts

Social Studies

Math

Science

Resource

esawyer@westportps.org

jaysseh@westportps.org

cjones@westportps.org

jmurzin@westportps.org

ckneisel@westportps.org

Please email individual teachers if you have a question about a particular assignment or class. If your child is out sick for one or two days, they should check Schoology for the homework, then see each teacher when they return to school. If your child is out sick for three or more days, email Ms. Sawyer who will coordinate with the team to provide work for your child. Whenever students miss school they need to check in with all their teachers following their return.

Ms. Sawyer is the Red Team Leader. Please contact her for whole team questions.

# Power School and Schoology

*Link is at the top of the BMS home page.*

## Power School

**Attendance**

**Missing Work**

**Grades**

**Report Cards**

**Schedules**

## Schoology

**Updated Daily**

**Calendar**

**Homework**

**Study Guides**

**Log in using your child's account**

# Homework Suggestions

- Set aside a specific time each day that is designated "Homework Time"
- Find a quiet place in your home for your child to do homework. Ideally this space should have
  - a. no access to TV, phone or personal electronic devices
  - b. no unsupervised access to a computer
  - c. needed supplies (pencils, pens, paper, etc.)
- Ask your child to show you their assignment book and then compare with what is on Schoology. They should have the same information.
- If your child is confused or having difficulty, ask them what they did in class that day.
- Avoid "telling" your child what to do. Instead ask them questions that lead them to finding solutions themselves. (i.e. Do you have your notes from class?)
- Encourage your child to explain what they know and what they have already learned.

# Extra Help Schedule

Connie Jones	Math	Tuesday 7:30 -8:00 AM and Wednesday 2:45-3-35 PM
Jessica Aysseh	Social Studies	Any morning, 7:30 AM
Emily Sawyer	Language Arts	Any morning except Thurs, 7:30 AM
Jen Murzin	Science	Tuesdays and Wednesdays 2:45 - 3:15

# Guidance Updates

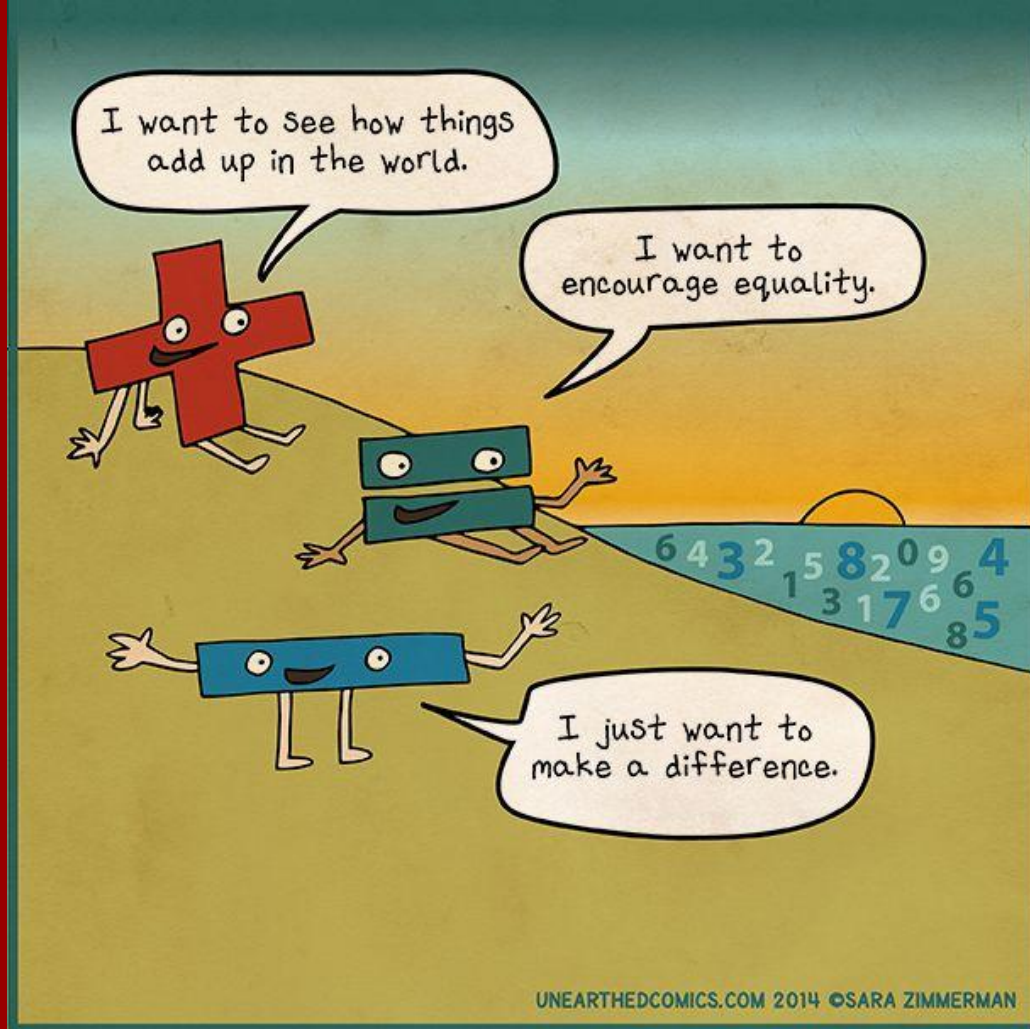
- As of today each child has participated Cookies and Conversations
- On October 28th we introduced the students to Navinance
- We have begun running small groups which will last 12 weeks. There will be other opportunities for students to participate in small groups as the year progresses.
- Please contact either one of us with any questions or concerns

Dr. Balkcom [cbalkcom@westportps.org](mailto:cbalkcom@westportps.org) ext. 1678

Ms. Wecker [awecker@wesetportps.org](mailto:awecker@wesetportps.org) ext. 1653

Welcome to 6th Grade Math  
Connie Jones  
203-341-1654

[cjones@westportps.org](mailto:cjones@westportps.org)





**Consultant and Author**  
Dr. Fong Ho Kheong

**Authors**  
Gan Kee Soon and Dr. Ng Wee Leng

**U.S. Consultants**  
Dr. Richard Bisk  
Andy Clark

- Focused, coherent curriculum
- Equal emphasis on conceptual understanding and fluency with skills
- Use of concrete and pictorial representations to transition to the symbolic
- Multi-step and non-routine problem solving
- Hands on work in pairs and small groups

# Units of Study

- Integers
- Fractions, decimals and percents
- Ratios and rates
- Expressions, equations and inequalities
- Geometry
- Data and statistical measures



# What we are doing now.

Prime numbers

Composite numbers

Prime factorization

Factors

Greatest Common Factor

Least Common Multiple

Square and Cubes

Order of Operations

## Next units:

Ratio

Rates

# MATH HOMEWORK

- Students should spend about 20 minutes on homework each night.
- Full credit is given for homework even if it is not complete, but student shows an attempt on each question (10 point).
- If a student completes an assignment after the due date (7 points).
- If a student does not complete a homework assignment, ( 5 points).

# **Math grade:**

**90% of the grade is based on tests and quizzes.**

**10% of the grade is based on homework and graded class assignments.**

# Class Rules and Procedures

Students are to get to class on time and ready to learn.

Students are prepared for class with all needed supplies.

Students are to make good choices and take responsibility for their actions.

Students are to be respectful of everyone in the classroom.

Always do your personal best!

# 6th Grade

## Social Studies

### World Geography and Cultures

Jessica Aysseh

[jaysseh@westportps.org](mailto:jaysseh@westportps.org)

203-341-1555



# World Cultures and Geography

## MINI-UNIT/INTRO

•  
-

Culture

Social Sciences

World Geography

## REGIONS OF STUDY:

Middle East

Western Europe

China and its

Neighbors

West and Central  
Africa



## MIDDLE EAST

- Read Aloud: *The White Zone*
- Middle East Map and physical features
- Film: *Guns, Germs, and Steel (episode one)*
- Ancient Civilization in the Middle East
- Islam, Judaism, Christianity
- Mini Essay - geography and culture in Mesopotamia
- Israeli-Palestinian conflict - A History
- Current Events: Diversity and Conflict

# Science

Jennifer Murzin

203-341-1656

[jmurzin@westportps.org](mailto:jmurzin@westportps.org)

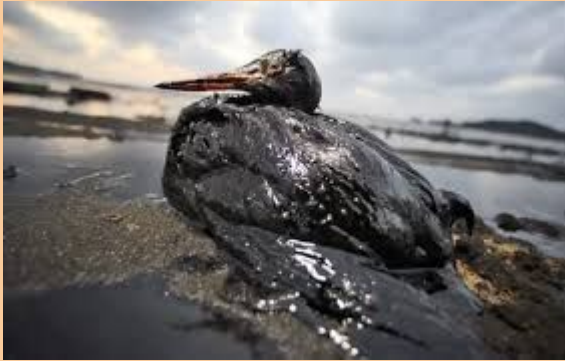


**The day the entire 6<sup>th</sup> grade class  
turned their homework in on time**

# Science - Plastic unit

- **Why is plastic so bad?**
  - **Phenomenon - Great Pacific Garbage Patch, Oil, fleece, chapstick, plastic.**

○





# Science - plastic unit

- How plastic affects marine life.
- How oil, plastic, polymers, polyester and clothing are each related to one another.
- Natural items vs man-made items
- How lots of man-made items originally come from natural items.
- Properties of different materials and different types of plastics
- Physical and Chemical changes

# Science - plastic unit

They've found these connections through:

- reading articles,
- doing activities where they need to sort items and explain how and why they sorted them - *critical thinking*
- Demonstrations like elephant toothpaste - so cool!
- Labs like gel worm lab (also cool!), baking soda and vinegar, copper sulfate and sodium carbonate, etc.

# Science

Where we are going next...

Finish plastic unit with the effects of plastic on populations of animals.

Ecology - ecosystems, populations, natural resources (tie back to oil!)

Some computer simulations (Gizmo) - they can manipulate variables and watch the effect it has on other things.

# Science

*How has Earth changed and how is it still changing?*

*Plate tectonics*

*convection currents in the mantle*

*formation of different landforms*

*density*

*rock cycle*

*weathering and erosion*

# Science Journal

- Shows student thinking process and growth
- Neat and organized
- Used everyday
- Kept in classroom (mostly)

# Science grades

- Check ins
- Science Journal - Google Classroom - accessed using Westport email account
- Homework
- Quizzes/Tests

Emily Sawyer

Language Arts

[esawyer@westportps.org](mailto:esawyer@westportps.org)

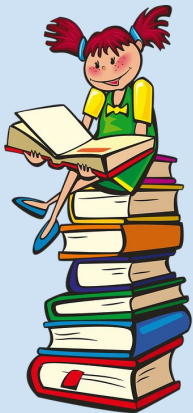




# Where We've Been

We began our year with our “Reading Like a Boss” unit! We learned the following strategies to become BOSS readers:

- Identifying character traits & feelings
- Weighing character traits - which matter more to the story?
- Identifying character pressures
- Looking at setting: naming the mood of the place
- Considering how the mood affects characters
- Considering how characters can affect the mood
- Thinking about motif
- How do I turn a motif into a theme statement?
- What makes a good theme statement?
- How to construct a paragraph
- How to find STRONG evidence
- Tracking our reading and reflecting on our reading habits
- Learning to analyze our reading and write about it!



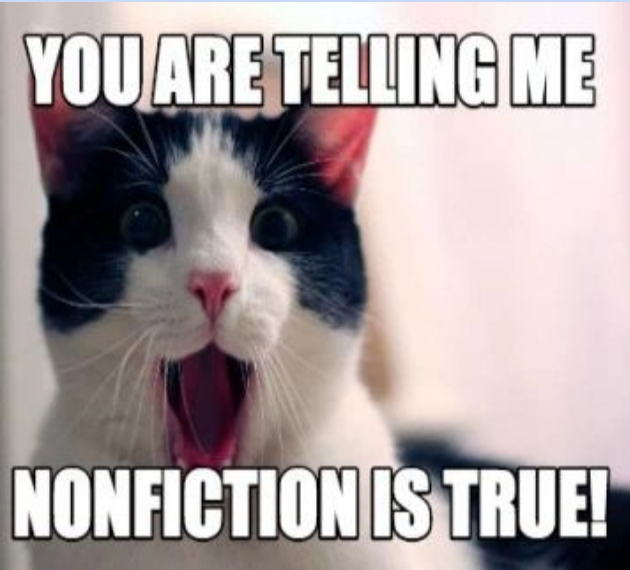


## Where We Are

- We're currently in the midst of a personal narrative unit. We've learned:
  - Different ways to brainstorm!
  - How to be more descriptive (imagery, strong word choice, vivid verbs)
  - The importance of dialogue
  - Author's POV



# Where We're Going



- We'll end 2019 by handing in our personal narratives at the beginning of December
  - We'll then do a 2 week mini unit to review important strategies that nonfiction readers use!
  - We'll start the new year in a nonfiction reading book club, and learn even more strategies!
  - We'll then move into nonfiction writing :)
-

# General Reading Reminders

- **The general reading rule is that students should be reading 20 minutes a day at home**
  - Flexible to your child's schedule
  - No *nightly* logging of reading
  - There are SO MANY ways to get a book: my classroom library; Bedford Library; Westport Public Library; Barnes and Noble; Amazon - do what you can to encourage your child to read voraciously!!!
-

# Language Arts Curriculum



<b><u>Reading Units</u></b>	<b><u>Writing Units</u></b>
<b>1. Reading Like a Boss</b>	<b>2. Personal Narratives</b>
<b>3. Nonfiction Reading</b>	<b>4. Information Writing</b>
<b>5. Social Issues Book Clubs</b>	<b>6. Argumentative Theme Writing</b>

